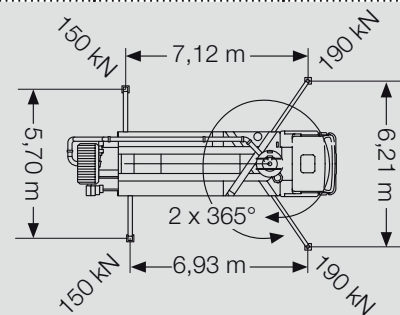


S 36 X RaZor Truck-mounted concrete pump

Technical Data

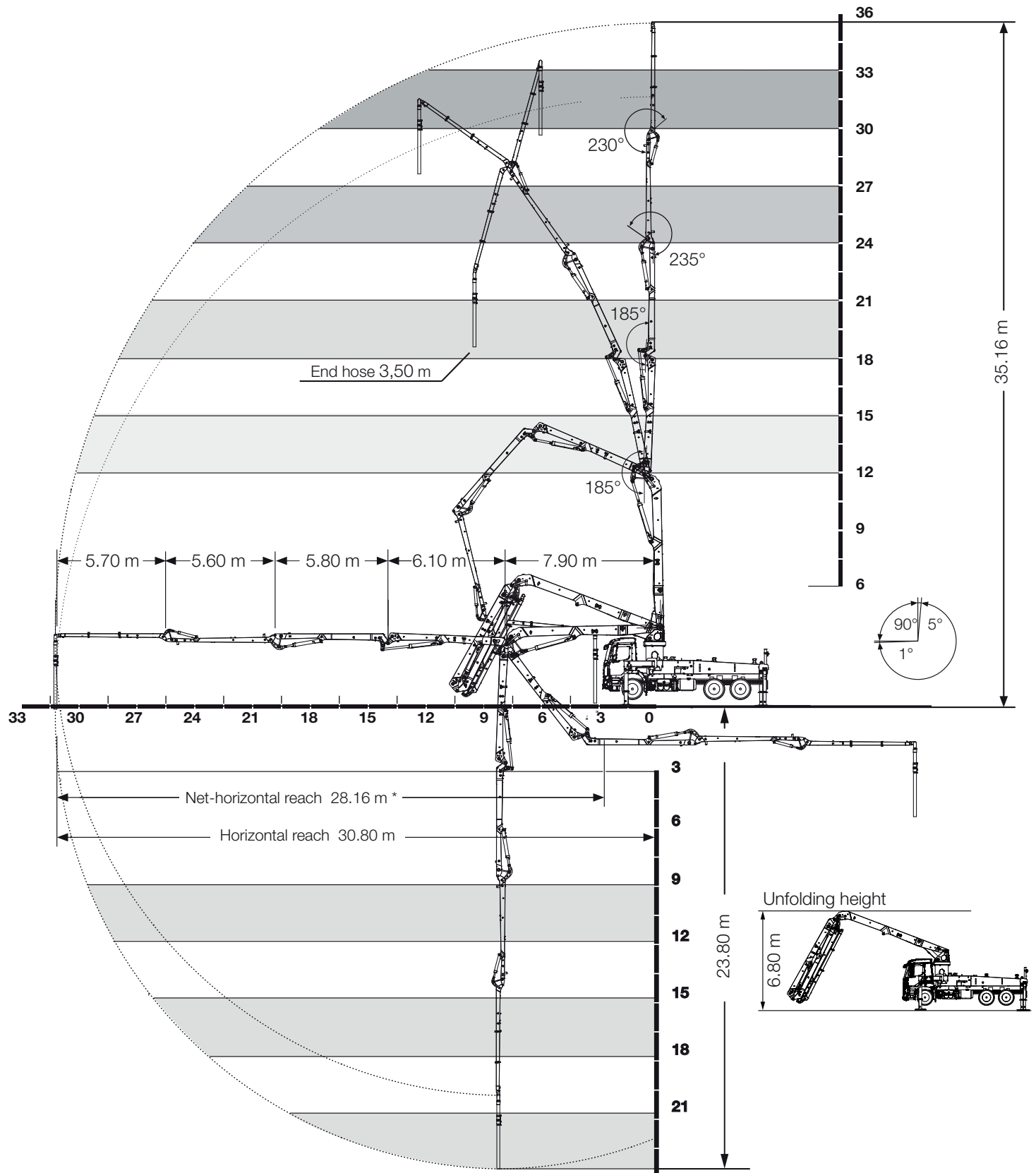
| Performance | | | | | | |
|--------------------------------|-------------------|--------------------------------------|----------------------------|----------------------------|--------------|--------------|
| Pump kit | | P2023-110/75 | P2023-110/75 | P2023-110/75 | P2025-120/80 | P2025-120/80 |
| Drive | l/min | 380 | 535 | 636 | 535 | 636 |
| Delivery cylinders | mm | 230 x 2,000 | 230 x 2,000 | 230 x 2,000 | 250 x 2,000 | 250 x 2,000 |
| Concrete output max. | m ³ /h | 98 | 136 | 161 | 136 | 161 |
| Pressure on concrete max. | bar | 85 | 85 | 85 | 85 | 85 |
| Stroke rate max. | 1/min. | 20 | 27 | 32 | 23 | 27 |
| Concrete valve | | M-ROCK (Option: B-ROCK) | M-ROCK (Option: B-ROCK) | M-ROCK (Option: B-ROCK) | B-ROCK | B-ROCK |
| Hydraulic system | | | | | | |
| Design | | open system | | | | |
| Hydraulic tank | l | 370 | | | | |
| Boom | | 36 RZ | | | | |
| Delivery line | | DN 125 | | | | |
| Length of end hose | m | 3.5 | | | | |
| Vertical reach | m | 35.12 | | | | |
| Reach depth | m | 23.74 | | | | |
| Gross horizontal reach | m | 30.80 (from centre of turret) | | | | |
| Net horizontal reach | m | 28.16* (from front bumper) | | | | |
| Number of boom sections | | 5 | | | | |
| Height of the inflexion points | m | 4.02 / 11.92 / 18.02 / 23.82 / 29.42 | | | | |
| Slewing range | | 2 x 365° | | | | |
| Folding height | m | 6.8 | | | | |
| Support | | | | | | |
| Outrigger width, front | m | 6.21 | | | | |
| Outrigger width, rear | m | 5.70 | | | | |
| Outrigger load, front | kN | 190 | | | | |
| Outrigger load, rear | kN | 150 | | | | |
| Chassis examples**) | | Mercedes-Benz Arocs 2740 | | MAN TGS 26.360 | | |
| Axles configuration | | 6x4 | | 6x4 | | |
| Wheelbase | | 4,200 | | 4,200 | | |
| Length | | 10,400 | | 10,430 | | |
| Miscellaneous | | | | | | |
| Water tank | l | 420 (Option: 610 l rear water tank) | | | | |



*depending on the chassis **other chassis possible

S 36 X RaZor Truck-mounted concrete pump

Working range



* from front bumper

** from centre of turret